



FRONT ELEVATION

OVERVIEW

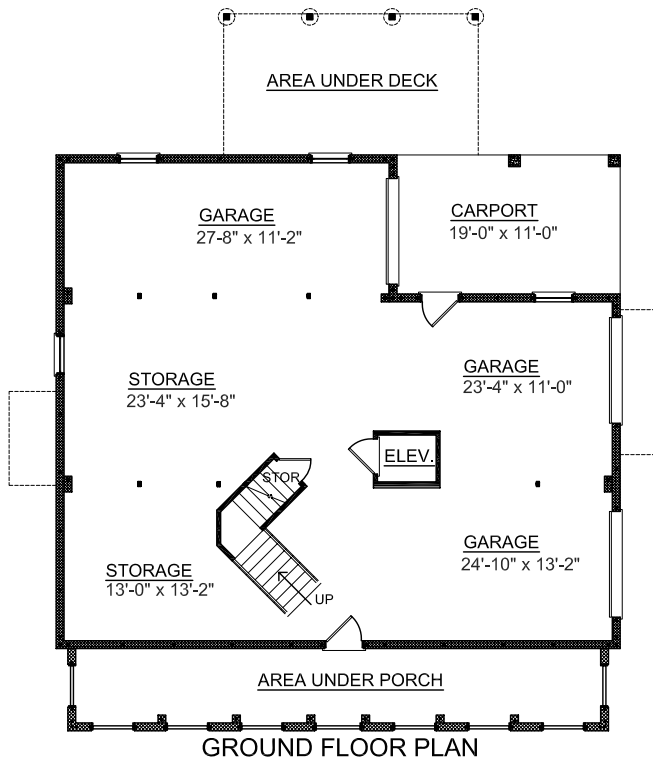
TOTAL: 2766 Sq. Ft.
 BEDROOMS: 4
 BATHROOMS: 3.5

- 9' Ceiling Heights Throughout both First and Second Floors
- Open Two Story Ceiling in Foyer and Great Room
- Gas Fireplace in Great Room
- Formal Dining Room with Decorative Columns
- Abundant walk-in closets in all Bedrooms
- Large Master Bedroom with Sitting Area
- First Floor Master Suite with Dual Walk-in Closets and Vanity
- Master Bath has Relaxing Whirlpool and Separate Shower
- Kitchen has Walk-in Pantry and Large Work Island
- Pass-thru Sliding Window Over Kitchen Sink onto a Bar Top in the Screened Porch
- Elevator Space on All Floors

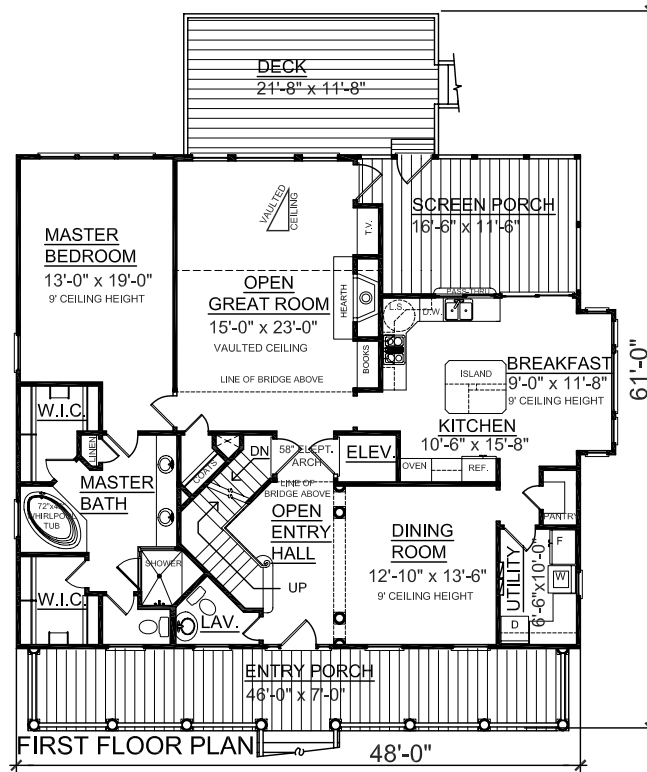


REAR ELEVATION

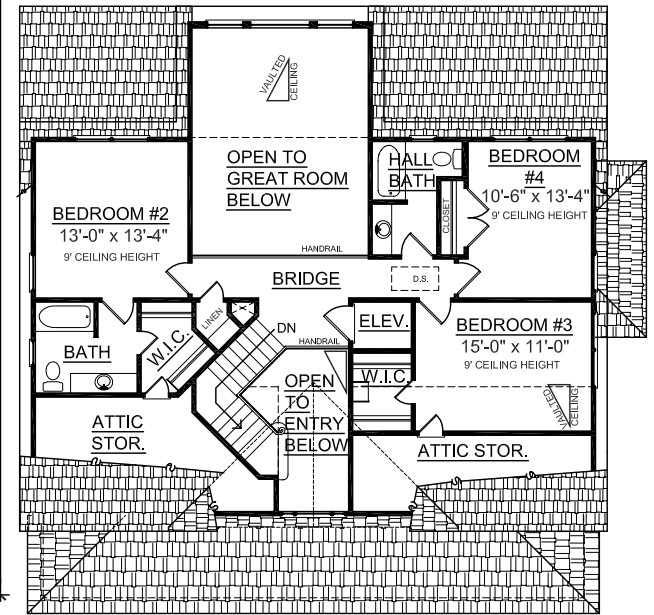
| | |
|----------------|--------------|
| First Floor | 1845 Sq. Ft. |
| Second Floor | 921 Sq. Ft. |
| Garage | 1791 Sq. Ft. |
| Rear Deck | 260 Sq. Ft. |
| Screen Porch | 208 Sq. Ft. |
| Front Porch | 322 Sq. Ft. |
| Carport | 225 Sq. Ft. |
| Overall Height | 34'-6" |



GROUND FLOOR PLAN



FIRST FLOOR PLAN



SECOND FLOOR PLAN